



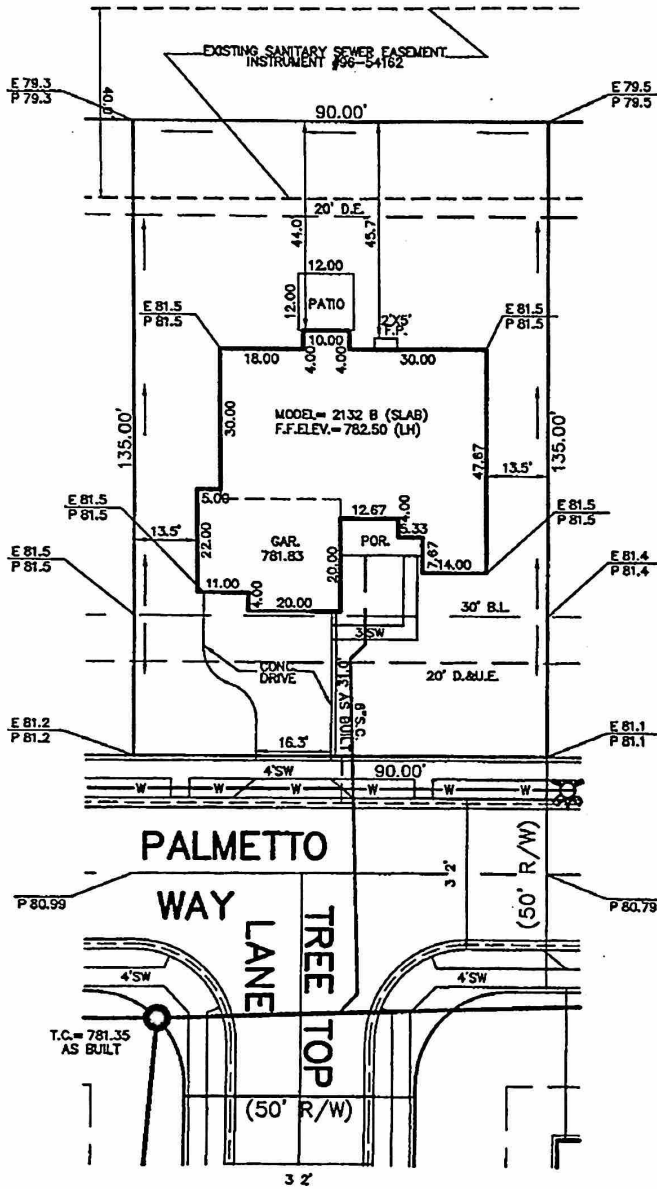
**CONSULTING ENGINEERS
LAND SURVEYORS**
9940 Allisonville Rd. - Fishers, IN 46038
(317) 849-5935 • 1-800-728-6917 • FAX: (317) 849-5942

JOB ID CTM.46

CONTROL # 48537 WEST

C.A. #7
VAR. D.U.&S.E.&L.M.A.E.

16825 PALMETTO WAY



1" = 30'
LOT AREA: 12,150 Sq. Ft.

- LEGEND:**
E 89.99 EXISTING GRADE (BEFORE CONST.)
P 99.99 PROPOSED GRADE (AFTER CONST.)
- S.S.D. --- SUB-SURFACE DRAIN
 - SANITARY SEWER
 - STORM SEWER
 - W --- WATER MAIN
 - W --- 3/4" WATER CONNECTION
 - SW --- SWALE
 - SF --- SILT FENCE
 - SEWER MANHOLE
 - STORM MANHOLE
 - CURB INLET
 - ⊗ FIRE HYDRANT
 - D.&U.E. DRAINAGE & UTILITY EASEMENT
 - L.E. LANDSCAPING EASEMENT
 - S.L.E. SIGN LANDSCAPE EASEMENT

ALL UNDERGROUND SEWERS AND UTILITIES SHOWN ARE PLOTTED BY SCALE FROM "RECORD DRAWINGS" FURNISHED BY ENGINEER.

SOD: 2,826 ± Sq. Ft.
GRADED ONLY: 5,620 ± Sq. Ft.
CONC. DRIVEWAY: 889 ± Sq. Ft.
PRIVATE WALK: 101 ± Sq. Ft.
PUBLIC WALK: 327 ± Sq. Ft.



Curtis C. Huff

2ND REV ADDED HSE EXT
03/17/04 JLR
1ST REV CHG HSE MDL
02/27/04 DSM
02/04/04 CSK
"HOLEY MOLEY SEZ"
"DON'T DIG BLIND"
CALL TWO WORKING DAYS BEFORE YOU DIG.
IT'S THE LAW
1-800-382-5544



LOT 46
CHERRY TREE
MEADOWS
SECTION 2
INST. 200300057445
P.C. #3 SLIDE #186
ZONING: R-2
8' MIN. SIDE YARD
20' MIN. REAR YARD